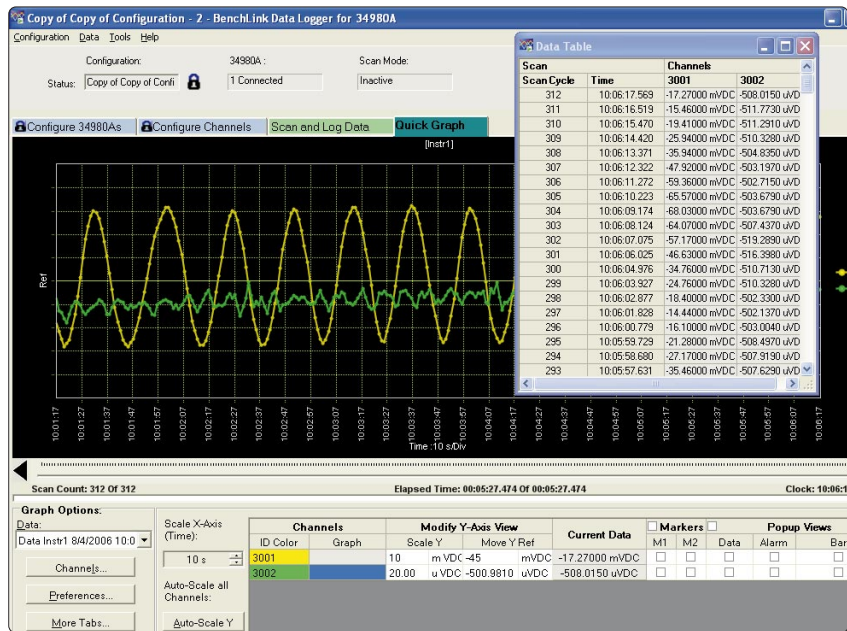


# Agilent 34826A – BenchLink Data Logger Software for 34980A

**High-speed data logging with  
no programming required**

### Key features

- Supports high-performance data logging for the 34980A Switch/Measure unit
- Quick test setup and execution
- Set alarms and execute scans
- Collect, monitor and manage data
- Present data on a single or multiple graphs
- Export data to other applications for presentation and analysis



The Agilent BenchLink Data Logger software provides a convenient way to collect and analyze your data. This software is a Windows®-based application that uses a familiar spreadsheet environment to define measurement data to be collected. The tab-based format makes it easy to set up and initiate scans. Simply identify the measurements you want to acquire, initiate the process, and see the data displayed real-time.

With the BenchLink Data Logger software you get PC-based data logging capability without spending hours programming.

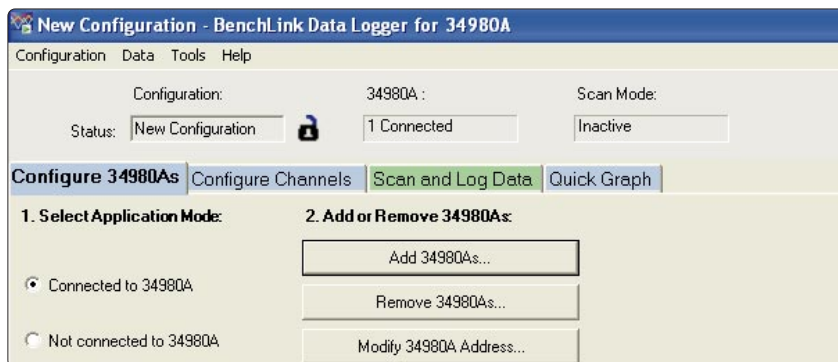
This BenchLink software supports advanced features of the 34980A. You can log data at high speeds with the 34925A FET multiplexer at 900 ch/sec. Additionally, with

the high-density capabilities of the 34980A, you can capture up to 560 2-wire multiplexer channels from one 34980A mainframe, or 1120 channels from 2 34980As.

With the Windows tabbed-based interface, you can use the 4 easy steps to setup and capture your data:

- Configure 34980As
- Configure Channels
- Scan and Log Data
- Quick Graph

You can specify individual channel setups and perform statistical calculations to analyze the data points you want. Create computed channels for mathematical relationships with +, -, \*, /, dB, dBm, dBV,  $\sqrt{x}$ , SRT, full,  $\sqrt{1/2}$  or 1/4 bridge strain. Graph your data, save it to disk, or you can copy data to the Windows clipboard for export to other applications.



The raw data is saved in .CSV format and can be easily imported into standard Microsoft® applications such as Microsoft Word and Excel for further analysis and documentation. Whether you monitor incoming data or review historical data, you can use one of the many analog or digital options to display your data.

The Windows user interface is also localized into multiple languages and includes context sensitive help.

Use the quick graph tab to monitor your data real time. You can specify multiple channels per graph, or send collected data to multiple graphs. Use strip charts with

markers and alarm indication, or histograms with statistics. Also, the graphs can be copied into other applications for inclusion in presentations or reports.

Additional display options include single channel results with AVG, MIN, and MAX.

Data management is vital for data logging applications. The BenchLink software features a data manager that allows you to easily manage all configurations and dataset files. Use this feature to copy instrument settings, find related data logs, rename files, edit comments, export data logs to Comma separated variable (CSV) format or just delete unwanted data.

## Specifications

### System Requirements

#### Operating system:

Windows 2000 SP4, XP SP 2

**Controller:** Recommend Pentium® 4, 800 MHz or greater, Min: Pentium III, 500 MHz

**RAM:** Recommend 256 MB or greater, Min 128 MB

**Disk Space:** Recommend 200 MB, Min 100 MB

**Display:** 1024x768 resolution, 256 colors

Adobe® Acrobat® Reader V5.0 or higher  
(to view documentation)

**Included run-time software components:**  
Microsoft .NET V1.1  
Microsoft Data access components V2.8 SP1

**Agilent IO Libraries Version 14.1 or later**  
(included on a separate CD)

### Supported Instruments

34980A Multifunction Switch/Measure Unit with DMM and any of the following modules:

- 34921A/22A/23A/24A/25A Multiplexers
- 34952A Multifunction Module
- Supports one instrument at full speed or 2 instruments at a reduced speed

### Supported interfaces:

- IEEE-488 GPIB, LAN, USB

### Performance

Scanning speeds with 34980A:

343921A/22A	100 ch/sec
34923A/24A	500 ch/sec
34925A	900 ch/sec
34952A	DIO read/write speed 95 ch/sec

\* Speeds are for 4½ digits, delay 0, display off, autozero off. Scanning is within bank on the same module. Add 10 ms for between banks or modules. See the 34980A data sheet for additional 34980A performance specs.

### Localization

GUI fully localized with context-sensitive help in English, Simplified Chinese, Japanese, Korean, French, and German.

### Ordering Information

An evaluation version of the BenchLink Data Logger software ships with the 34980A Switch/measure unit. This version is fully functional and works for 30 scans. A license is required to be installed in the 34980A to use the software beyond the evaluation period.

**Recommended:** Purchase the 34826A BenchLink Data Logger Software License with the 34980A to have the software license installed into the instrument.

**Optional:** purchase the 34826A at a later date and install the license on your 34980A instrument.

Once installed in an instrument, the software license is attached to that instrument and cannot be transported to another instrument.

## Related Literature

*Agilent 34980A Multifunction  
Switch/measure Unit  
Data Sheet  
5989-1437EN*

### Agilent Technologies' Test and Measurement Support, Services, and Assistance

Agilent Technologies aims to maximize the value you receive, while minimizing your risk and problems. We strive to ensure that you get the test and measurement capabilities you paid for and obtain the support you need. Our extensive support resources and services can help you choose the right Agilent products for your applications and apply them successfully. Every instrument and system we sell has a global warranty. Two concepts underlie Agilent's overall support policy: "Our Promise" and "Your Advantage."

#### Our Promise

Our Promise means your Agilent test and measurement equipment will meet its advertised performance and functionality. When you are choosing new equipment, we will help you with product information, including realistic performance specifications and practical recommendations from experienced test engineers. When you receive your new Agilent equipment, we can help verify that it works properly and help with initial product operation.

#### Your Advantage

Your Advantage means that Agilent offers a wide range of additional expert test and measurement services, which you can purchase according to your unique technical and business needs. Solve problems efficiently and gain a competitive edge by contracting with us for calibration, extra-cost upgrades, out-of-warranty repairs, and on-site education and training, as well as design, system integration, project management, and other professional engineering services. Experienced Agilent engineers and technicians worldwide can help you maximize your productivity, optimize the return on investment of your Agilent instruments and systems, and obtain dependable measurement accuracy for the life of those products.



#### Agilent Email Updates

[www.agilent.com/find/emailupdates](http://www.agilent.com/find/emailupdates)

Get the latest information on the products and applications you select.



#### Agilent Direct

[www.agilent.com/find/agilentdirect](http://www.agilent.com/find/agilentdirect)

Quickly choose and use your test equipment solutions with confidence.



#### Agilent Open

##### Agilent Open Connectivity

Agilent Open is a versatile combination of test-system hardware, I/O and software tools. It accelerates the creation of streamlined test systems that are easy to enhance and maintain by giving you greater choice in measurements, connectivity and programming. Utilizing these advantages, your team has more time to focus on what matters most—the performance, reliability and delivery of your product.

[www.agilent.com/find/open](http://www.agilent.com/find/open)

## www.agilent.com

For more information on Agilent Technologies' products, applications or services, please contact your local Agilent office. The complete list is available at:

[www.agilent.com/find/contactus](http://www.agilent.com/find/contactus)

### Phone or Fax

#### United States:

(tel) 800 829 4444  
(fax) 800 829 4433

#### Canada:

(tel) 877 894 4414  
(fax) 800 746 4866

#### China:

(tel) 800 810 0189  
(fax) 800 820 2816

#### Europe:

(tel) 31 20 547 2111

#### Japan:

(tel) (81) 426 56 7832  
(fax) (81) 426 56 7840

#### Korea:

(tel) (080) 769 0800  
(fax) (080) 769 0900

#### Latin America:

(tel) (305) 269 7500

#### Taiwan:

(tel) 0800 047 866  
(fax) 0800 286 331

#### Other Asia Pacific Countries:

(tel) (65) 6375 8100  
(fax) (65) 6755 0042

Email: [tm\\_ap@agilent.com](mailto:tm_ap@agilent.com)

Contacts revised: 09/26/05

Product specifications and descriptions in this document subject to change without notice.

Microsoft, Windows, and Windows NT are U.S. registered trademarks of Microsoft Corporation.

Adobe and Acrobat are trademarks of Adobe Systems Incorporated.

Pentium is a U.S. registered trademark of Intel Corporation.

© Agilent Technologies, Inc. 2006  
Printed in the USA, August 10, 2006  
5989-5473EN



**Agilent Technologies**