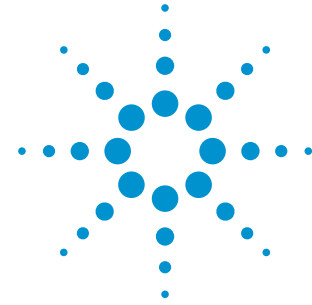


## Quick Fact Sheet

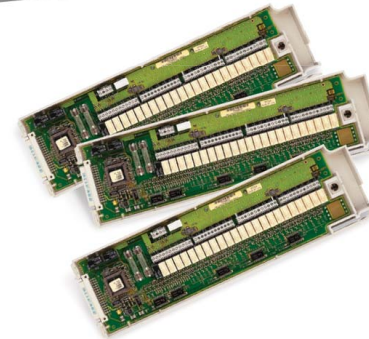
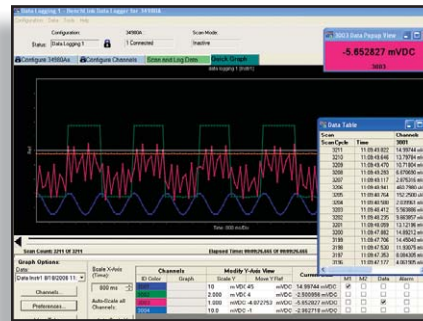
# Agilent 34970A & 34972A Data Acquisition and Switching



The 34970A is an industry leader in small to medium applications. The new 34972A offers LAN and USB so customers can easily connect, configure and acquire data on the bench, on the network or in the field. The 34980 extends the capability for medium to large scale applications:

### Key Features

- 34970A/34972A LXI DAC/Switch Unit (3-slot, up to 60 2-wire channels)
- Internal 6 ½ Digit DMM for precision measurements
- Easy-to-read display to monitor the setup and measured values
- Easy-to-use front panel for manual setup control
- 34970A Computer interfaces: GPIB, RS-232
- 34972A Computer interfaces: LAN, USB
- 34972A: Adds graphical web interfaces and USB memory port for remote applications
- Eight different plug-in modules for 34970 & 34972
- SCPI programming language, drivers and Data Logger software included



### High quality switching with built-in 6 ½ Digit Digital Multimeter (DMM)

- Wide variety of switching: General Purpose, Multiplexer, Matrix, RF,  $\mu$ VV, and  $\mu$ W relay driver
- Internal DMM measures DC/AC voltage and current, Resistance, Temperature, Frequency/Totalize
- Digital to Analog Converters for analog output
- Digital Input and Output



Agilent Technologies

TESTEQUITY

www.testequity.com 800-732-3457

## Quick Fact Sheet

# Agilent 34970A & 34972A Data Acquisition and Switching

### Uncompromising Performance

- High precision measurements
- High quality switching
- High productivity software

### 34970A/34972A Plug-in Modules

Part #	Description
34901A	20 Chan GP Mux
34902A	16 Chan Hi Speed Mux
34908A	40 Chan SE Mux
34903A	20 Chan Actuator/Switch
34904A	4x8 Matrix
34905A	50 ohm RF Mux
34906A	75 ohm RF Mux
34907A	Multifunction

### 34970A/34972A Data Acquisition Accessories

Part #	Description
34830A	BenchLink DataLogger Pro Software License
34307A	10-Pack J-type thermocouples
34308A	5-Pack 10-kOhm Thermistors

### Everything you need to know about the Mainframes

Features	34970A	34972A
Analog Measurements	Voltage, current, resistance, frequency & temperature	
Digital IO	Up to 48 bits	
Analog Output	-10 V to +10 V, 20 mA	
Multiplexing	Max 120 1-wire, 60 2-wire	
Matrix	Max 96 crosspoints	
General Purpose	Max 60 switches	
RF Multiplexing	Max 24 chan, 2 GHz	
Graphical Web Interface	na	Yes
USB Memory Port	na	Yes
Interface	GPIB, RS-232	LAN, USB

#### Recommended service options

Additional two years of Return-to-Agilent warranty  
 Additional two years of Return-to-Agilent calibrations  
 For more information, go to [www.agilent.com/find/removealldoubt](http://www.agilent.com/find/removealldoubt)

