

Agilent 6000L Series Oscilloscopes

The highest performance and lowest cost automated test oscilloscope in its class.



Agilent 6000L Series scopes offer four channels in a 1U-high form factor, giving you a space-efficient and inexpensive way to integrate scopes into your test systems.



Make the most of your rack space with an Agilent 6000L Series oscilloscope.

Key specifications

Bandwidth	100 MHz, 500 MHz, 1 GHz
Sample rate	2 GS/s, 4 GS/s
Standard connectivity	LAN, GPIB, USB, XGA, LXI class C compliant
Memory	2 Mpts standard 8 Mpts optional
High-resolution acquisition	Up to 12 bits of resolution in high-res mode
Optimized for rack mount	1U-high with standard rack mount kit and rails
Code compatibility	100% software compatible with the 6000A Series portable scopes

Low-profile, high-density package saves rack space

The 6000L Series oscilloscopes provide up to 1-GHz bandwidth in a space-saving 1U-high 19-inch wide package so it saves your valuable rack space. The oscilloscopes have side and rear air vents (no top or bottom air vents) so other instruments can be mounted directly above or below them. Rack mount brackets and rack rails are standard with every unit.

LXI class C compliant

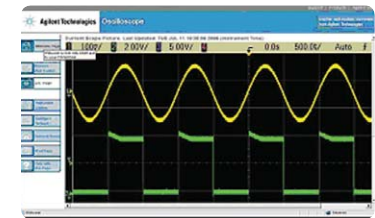
LAN eXtensions for Instrumentation (LXI) is the architecture for test systems that's based on proven, widely used standards such as Ethernet. By specifying the interaction of those standards, LXI enables fast, efficient, cost-effective creation and reconfiguration of test systems. The 6000L Series oscilloscopes are fully LXI class C compliant.

Easy system integration and configuration

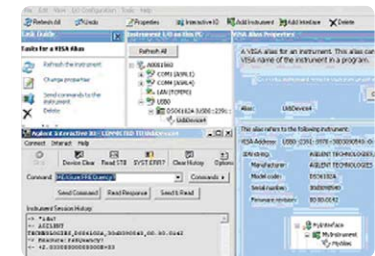
To simplify system development, the 6000L Series oscilloscopes come standard with an IVI-COM (Interchangeable Virtual Instruments) driver, and they support easy-to-use SCPI commands. 100% code compatibility with 6000A Series means your transition from R&D to manufacturing is easy and smooth.

Built-in Web control

The built-in Web server provides remote access and control of the instrument via a standard Java™-enabled Web browser on your computer. You can communicate with the scope over the scope's built-in LAN interface. Using the Web browser you can set up measurements, monitor waveforms, capture screen images and operate the scope remotely.



Remotely display and control your 6000L oscilloscope from any Java-enabled web browser over the oscilloscope's built-in LAN interface.



Establish instrument connection faster with Agilent IO Libraries Suite.



6000L oscilloscope models

Model	Bandwidth	Scope channels
DSO6014L	100 MHz	4-ch DSO*
DSO6054L	500 MHz	4-ch DSO*
DSO6104L	1 GHz	4-ch DSO*

*All models are easily upgradeable to MSO with either N2914A or N2915A



Applications and accessories*

Model	Description
N2920A	8 Mpts memory upgrade for DSO6014L
N2921A	8 Mpts memory upgrade for DSO6054L/6104L
N2914A	MSO upgrade for DSO6014L
N2915A	MSO upgrade for DSO6054L/6104L
N5427A (SEC)	Secure environment mode
N5423A (LSS)	I ² C/SPI decode option
N5424A (AMS)	CAN/LIN decode option
N5432A (FRS)	FlexRay automotive triggering and decode
N5406A	Xilinx FPGA dynamic probe
N5434A	Altera FPGA dynamic probe

*See Data Sheet for accessories included with the DSO6104L, DSO6054L and DSO6014L models.

Recommended probes

Model	Description
1160A	10:1 500 MHz, 1 M Ω , 6-9 pF
1161A	10:1 500 MHz, 1 M Ω , 12-14 pF
1163A	10:1 1.5 GHz, 50 Ω , 6-9 pF
1164A	10:1 500 MHz, 1 M Ω , 6-9 pF
1165A	10:1 600 MHz, 1 M Ω , 12-14 pF
10070C	1:1 passive probe with ID
10074C	10:1 150 MHz passive probe with ID (shipped standard with DSO6014L)
10073C	10:1 500 MHz passive probe with ID (shipped standard with DSO6054L & 6104L)

LXI is the LAN-based successor to GPIB, providing faster, more efficient connectivity. Agilent is a founding member of the LXI consortium.

www.lxistandard.org



For more information on this and other Agilent scopes please visit www.agilent.com/find/6000L

© Agilent Technologies, Inc. 2007
Printed in USA, September 20, 2007.

5989-7200EN



Agilent Technologies