

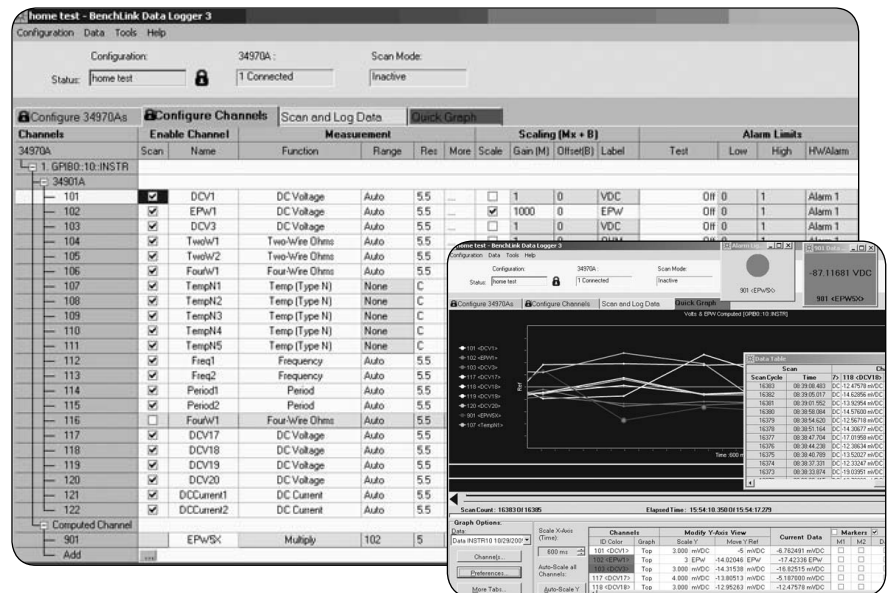
Agilent 34825A BenchLink Data Logger 3 Software for Agilent 34970A

Key features

- **Simple connection and test setup**
- **Collect data and monitor results**
- **Set alarms**
- **Quickly graph data on a single or multiple graphs**
- **Export data to other applications for analysis**
- **Manage data with new Data Manager**
- **Use with up to 4 instruments**

New and Improved BenchLink Data Logger 3 Simplifies Your Data Gathering

The Agilent BenchLink Data Logger 3 software provides a convenient way to collect and analyze your data. The software is a Windows®-based application that uses a familiar spreadsheet environment to define measurement data to be collected. Simply identify the measurements you want to acquire, initiate the process, and see the data displayed real-time. The new quick graph feature provides easy to use graphing with many options for graphing your data. With the BenchLink Data Logger 3 software you get PC-based data logging capability without spending hours programming. The Windows user interface is localized into multiple languages and includes context-sensitive help. With the Windows style GUI, you can specify individual channel setups and perform statistical calculations to analyze the data points you want. Create computed channels for mathematical relationships with +, -, *, /, dB, dBm, dBV, x², SRT, full, ½ or ¼ bridge strain. You can graph your data, save it to disk,



or copy data to the Windows clipboard for export to other applications. The raw data is saved in .CSV format and can be easily imported into standard Microsoft® applications such as Microsoft Word and Excel for further analysis and documentation. Whether you monitor incoming data or review historical data, you can use one of the many analog or digital options to display your data. Add, delete, size, and configure your displays real-time. Specify multiple channels per graph, or send your data to multiple graphs.

Use strip charts that include markers and alarm indication, or histograms with statistics. Additional display options include single channel results with AVG, MIN, and MAX. You can copy the graphs into other applications for inclusion in presentations or reports. With the new data manager, you control your data. Easily find stored datasets, rename, edit comments, export or simple delete old data. Conversion tools are also provided. If you have test setups saved from the previous BenchLink Data Logger Software, you can use these tools to import your files into the new Data Logger 3 software and save them in the new format.



Specifications

System Requirements

Operating system: Windows 98SE, NT®4.0 SP6a, 2000 SP4, XP SP 2

Controller: Recommend Pentium® 4, 800 MHz or greater, Min: Pentium III, 500 MHz

RAM: Recommend 256 MB or greater, Min 128 MB

Disk Space: Recommend 200 MB, Min 100 MB

Display: 800x600 resolution, 256 colors

Included run-time software components:

Adobe® Acrobat® Reader V5.0 or higher
(to view documentation)

Microsoft .NET V1.1

Microsoft Data access V2.8 SP1

Microsoft JET Engine 4.0 SP 8

(required when using Windows NT)

Microsoft Internet Explorer V6.0

(required when using Windows NT)

Agilent IO Libraries Version M

(for Windows NT, or Windows 98SE load version M.01.01)

Supported Interfaces

34970A data acquisition/switch unit with communication via:

- Serial port (COM1, 2, 3, or 4)
- IEEE-488 GPIB card
- LAN/GPIB Gateway—E5810A
- USB/GPIB—82357A

Localization

GUI fully localized with context-sensitive help in English, Simplified Chinese, Japanese, Korean, French, and German.

Ordering Information

34825A BenchLink Data Logger 3 software for 34970A

Note: The BenchLink Data Logger 3 software ships for free with all new orders of 34970A.

Agilent Email Updates

www.agilent.com/find/emailupdates

Get the latest information on the products and applications you select.

Pathways to Exceptional Test

Let Agilent help you streamline system development and lower the true cost of test. Our world-class measurement science and support can get you accurate results in a hurry. Agilent's instruments are optimized for use in systems, and our open industry software and I/O standards take the hassle out of creating test code. To see how you can get maximum leverage from Agilent's resources, go to www.agilent.com/find/buildyourown

Was This Useful?

If you found the information in this application note useful, feel free to visit these other Agilent websites dedicated to helping the engineer who solves difficult test problems:

Visit:

www.Agilent.com/find/appcentral

www.Agilent.com/find/connectivity

www.Agilent.com/find/adn

Related Literature

Agilent 34970A Data Acquisition/Switch Unit, Data Sheet

Literature Number 5965-4443EN

By internet, phone, or fax, get assistance with-all your test & measurement needs

Online assistance:

www.agilent.com/find/assist

Phone or Fax

United States:

(tel) 1 800 829 4444

Canada:

(tel) 1 877 894 4414

(fax) (905) 282 6495

China:

(tel) 800 810 0189

(fax) 800 820 2816

Europe:

(tel) (31 20) 547 2323

(fax) (31 20) 547 2390

Japan:

(tel) (81) 426 56 7832

(fax) (81) 426 56 7840

Korea:

(tel) (82 2) 2004 5004

(fax) (82 2) 2004 5115

Latin America:

(tel) (305) 269 7500

(fax) (305) 269 7599

Taiwan:

(tel) 0800 047 866

(fax) 0800 286 331

Other Asia Pacific Countries:

(tel) (65) 6375 8100

(fax) (65) 6836 0252

(e-mail) tm_asia@agilent.com

Microsoft, Windows, and Windows NT are U.S. registered trademarks of Microsoft Corporation.

Adobe and Acrobat are trademarks of Adobe Systems Incorporated.

Pentium is a U.S. registered trademark of Intel Corporation.

Product specifications and descriptions in this document subject to change without notice.

© Agilent Technologies, Inc. 2005
Printed in the USA December 9, 2005
5989-0918EN

